

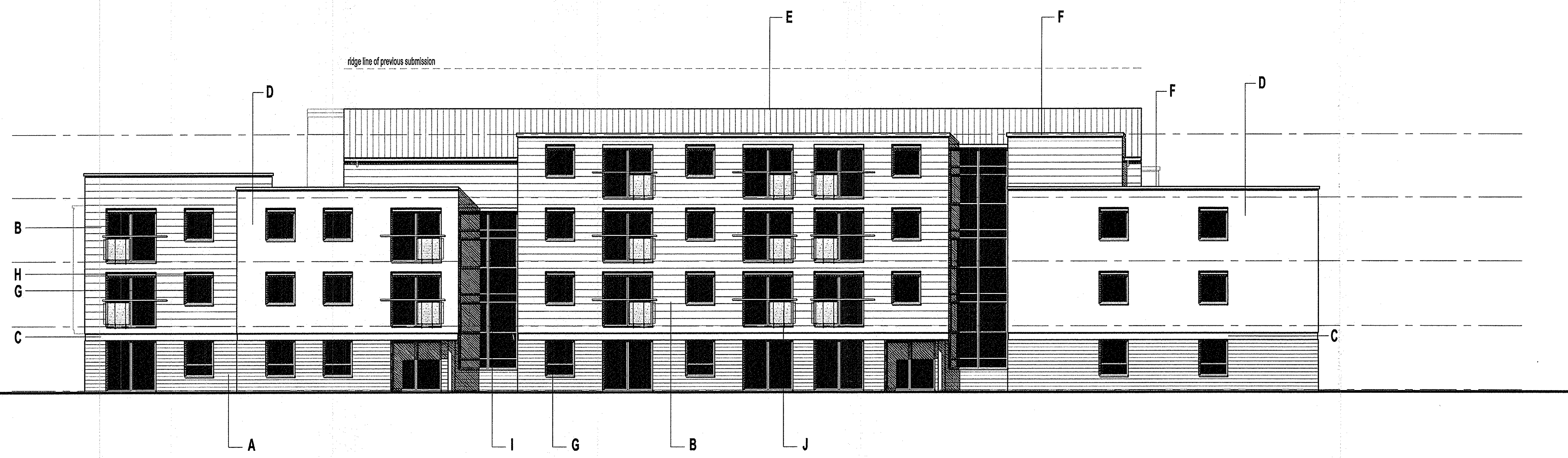
NOTES
 Contractor must verify all dimensions on site before commencing any work or shop drawings.
 If this drawing exceeds the quantities taken in any way the Architects are to be informed before the work is initiated.
 Only figured dimensions to be taken from this drawing. Do not scale off this drawing.
 Drawings based on Ordnance Survey and/or existing record drawings - design and drawing content subject to Site Survey, Structural Survey, Site Investigations, Planning and Statutory Requirements and Approvals.
 Authorised reproduction from Ordnance Survey Map with permission of the Controller of Her Majesty's Stationery Office. Crown Copyright reserved.
 Carey Jones Architects Limited Copyright.

This drawing originates from the CAD file:
 REVISIONS

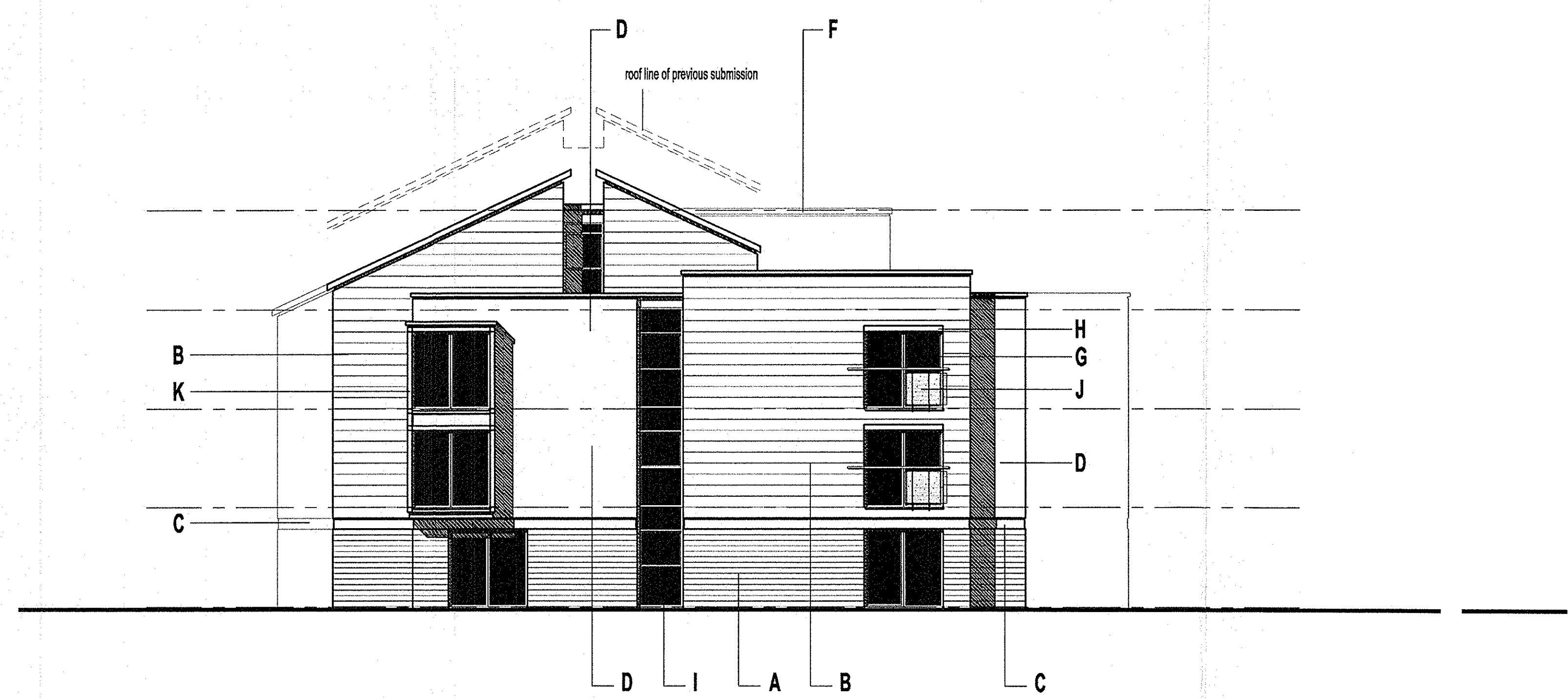
Rev	Desc	By	Date	Ch
A	REVISED IN ACCORDANCE WITH LCC	GJM	01.08.07	

24 / 4 12 / 05

LEEDS CITY COUNCIL
 Please refer to Decision Notice
 - 3 AUG 2007
REVISED



- A - 150mm coursed split faced stone to plinth
- B - 300mm coursed ashlar faced stone
- C - 300mm coursed ashlar stone recessed by 25mm
- D - Through colour white render
- E - Artificial slate to roof
- F - 100mm thk stone coping
- G - PPC Aluminium windows, colour anthracite grey
- H - PPC Aluminium head detail to windows with colour coordinatd ventilation grills, colour anthracite grey
- I - PPC Aluminium curtain walling, colour anthracite grey
- J - Painted MS balustrade with toughened glass infill, paint colour anthracite grey
- K - Painted MS channel section frame to projecting bay, paint colour anthracite grey



St Ann's Lane, Headingley

CAREYJONESARCHITECTS

Rose Wharf
 78 East Street
 Leeds
 LS9 8EE
 Tel + 44 (0) 113 224 5000
 Fax + 44 (0) 113 224 5001
 E-mail info@careyjones.com

Victoria House
 Southampton Row
 Bloomsbury
 London
 WC1B 4EA
 Tel + 44 (0) 207 269 9400
 Fax + 44 (0) 207 269 9401

Project:
**ST ANN'S LANE
 HEADINGLEY**

Title:
**APARTMENT ELEVATIONS
 SHEET 1 OF 2**

Scale:
 1:100@A1

Date:
 AUG '07

Drawing No:
 16,288 (20) 214

Drawn by:
 GM

Checked by:

Rev:
 A